



The Polo



Contents

03	Introduction	17	Polo GT TSI Automatic
05	Engine	19	Colours
07	Exteriors	20	Technical Specifications
11	Interiors	21	Features
15	Style	24	Accessories
16	Safety	33	Volkswagen Service



Power to play

Remember the toy car that went vroom.

For everything was play,

when your imagination filled the room.

Pipes were tunnels,

and floors were highways.

Armchairs were racetracks,

and doors were getaways.

Remember that feeling?

Well, we're bringing it back.

The Polo.

#PowerToPlay



Maximum power minimum consumption



TSI Engine

Engines should be about getting more, not settling for less.

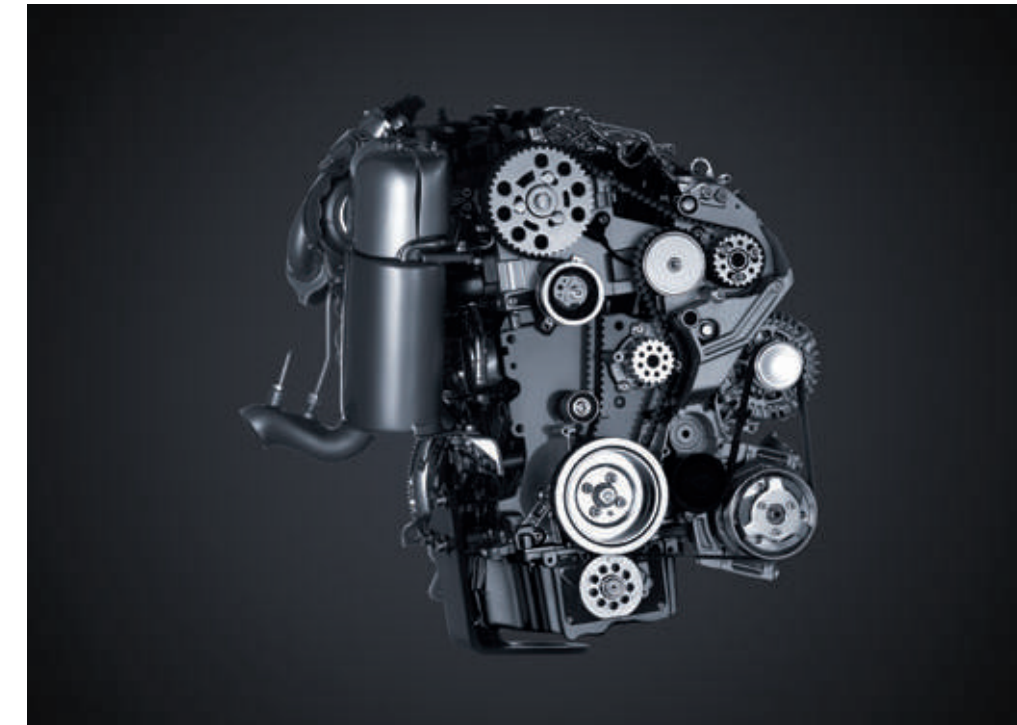
Volkswagen's revolutionary TSI engine strikes a fine balance between both, power and efficiency. It dominates with 110 PS and 175 Nm torque.

You'd think all this power would guzzle a lot of fuel, but you'd be wrong. It gets you through more kilometres with lesser emissions. Complementing this breakthrough internal framework is the superior build quality of Volkswagen.

Trust us, it won't cost you the Earth.

Power meets efficiency

Rev the engine, make it match to the beat of your own drums. A 3-cylinder beauty coupled with 5-speed Manual Transmission, the new eco-friendly 1L MPI engine in Volkswagen Polo is BS6 compliant. Compact and powerful, it's tailor-made with state-of-the-art precision to give you a memorable drive.



1



2



3

- 1 1L MPI Petrol Engine
- 2 BS6 Compliant
- 3 5-speed Manual Transmission

Dressed to impress

The Polo comes with more than just power. It comes with the style to carry it off effortlessly. Its all-new sporty aesthetics, inspired by the GTI, flow smoothly into the indomitable Honeycomb Grille, as well as the new Front and Rear Bumpers. The bold new Smoked Tail Lamps dazzle as they stand out and stand their own ground in this list of luminaries, while the Side Skirts outline the new playful personality of the Polo. Get in and make the roads your playground.



1



2



3



4



5

- 1 New Honeycomb Grille
- 2 New Sporty Side Skirts
- 3 New Front Bumper
- 4 New Rear Bumper with Diffuser
- 5 New Smoked Tail Lamps



Ready for fun

Nothing should come in the way of a fun driving experience. Which is why, we've made sure that every feature caters to your taste. Like the sporty R16 'Portago' Alloys, that are ready to serve both, the tough and the trendy. The stylish Electronically Foldable Side Mirrors, integrated with turn indicators, can be adjusted from your seat, while the Body-coloured Door Handles add to the distinct looks of the car. The Dual-beam Headlamps and Front Fog Lamps come with cornering lights that are meant for additional safety. The Heat Insulated Glass helps you keep your cool, no matter the weather. Even our Boot Opening Lever makes the smallest of actions like opening the boot absolutely effortless. Just a small testimony to the attention we give to every fine detail.

- 1 Dual-beam Headlamps and Front Fog Lamps
- 2 Heat Insulated Glass
- 3 Body-coloured Door Handles
- 4 Electronically Foldable Side Mirrors
- 5 Boot Opener in Volkswagen Logo
- 6 R16 'Portago' Alloys

Make a statement

Get ready to be awed every time you enter the Polo's black and grey cabin accentuated with chrome accents. Sink into the stylish upholstered seats, while the ambient lighting with theatre dimming effect, sets the mood.

The Leather-wrapped Steering Wheel feels as elegant and smooth to the hand as it is to handle, and comes with a brushed-aluminium finish that adds just the right amount of class to it.

The sweeping, scratch-resistant Dashboard houses an intelligent Touchscreen Infotainment System, an advanced Multi-function Display and everything you need at your fingertips.

The Multi-function Steering Controls let you stay in charge of the radio, music and your phone effortlessly, so there's never a dull moment. What's more, you can make calls through a simple voice command.

- 1 Multi-function Steering Controls
- 2 Touchscreen Infotainment System
- 3 Reach and Rake Adjustable Steering Wheel
- 4 Stylish Upholstery
- 5 High-quality, Scratch-resistant Dashboard



Play with ease

We've left no stone unturned in crafting comfortable interiors that are intuitive and a cut above the rest. Like the Mirror Adjustment Control, that's optimally placed and easy to use, to the Front Centre Armrest with concealed storage. Even those long drives on highways will now become effortless with Cruise Control that helps maintain a steady speed.

The Auto-dimming IRVM dims out any glare from vehicles that trail behind to save your eyes from strain. And in case of a sudden downpour, the Rain Sensor automatically activates the wipers. The Climatronic automatic air-conditioning, along with Rear AC Vent and the Cooled Glovebox, makes sure that all passengers have a comfortable journey, no matter what the temperature is outside. Now, nothing can stop you from being in your element with the Polo.



- 1 Auto-dimming IRVM
- 2 Cruise Control
- 3 Rear AC Vent
- 4 Automatic Rain-sensing Wipers
- 5 Mirror Adjustment Controls
- 6 Front Centre Armrest
- 7 Cooled Glovebox

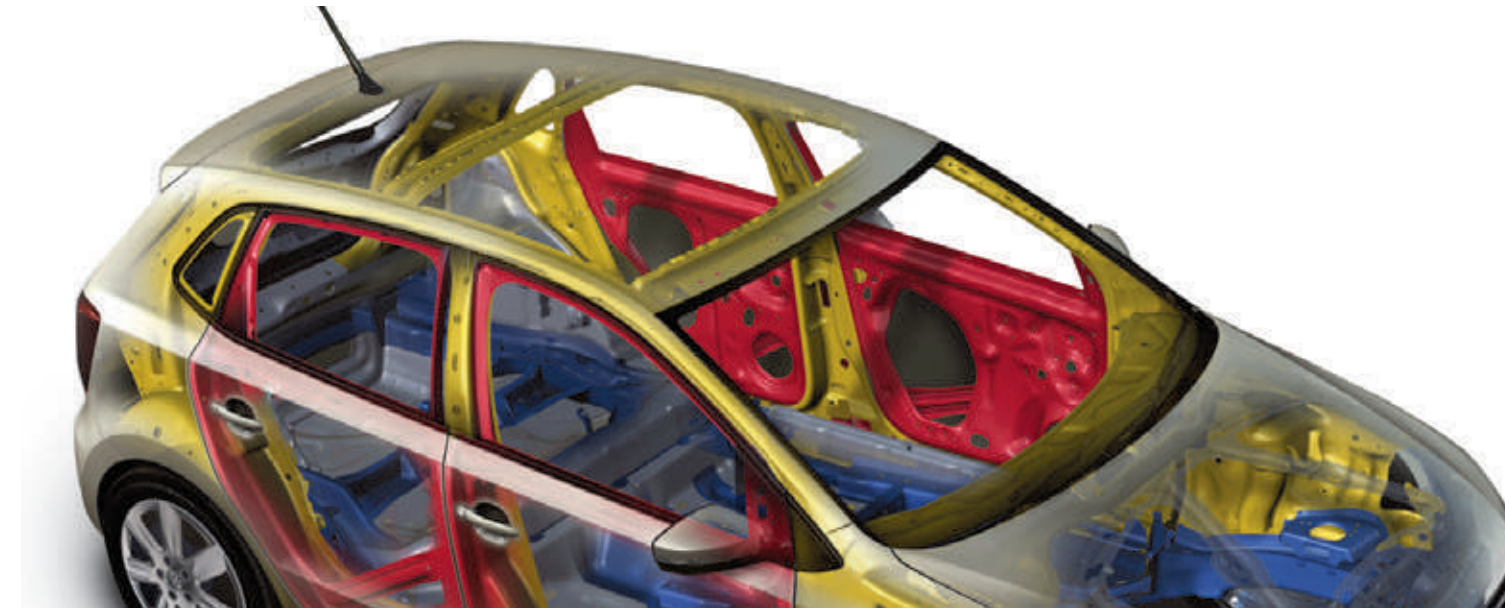
Lose the ability to blend in

The Polo makes a style statement even before it arrives. It's got enough red to pump adrenaline through veins and endorphins through brain. Enough brilliance that it looks like a beautiful garnet that playfully fits between a spectrum of hues. And more than enough lustre to get your heart racing the moment you lay your eyes on this stunning colour.



Responsible power

Nothing feels as good as a heady boost of confidence. Which is why every Volkswagen out of the factory is a force to be reckoned with. Trusted, checked, re-checked and rigorously quality-controlled to accuracy, it comes in a High-strength Steel Frame, with Anti-lock Braking System (ABS). Seats nestled comfortably as you ride in a Galvanised Steel Body that's enclosed by a laser-welded roof, and equipped with Dual-front Airbags as standard.



- 1 Dual-front Airbags
- 2 Anti-lock Braking System (ABS)



Most badges are made

This one's earned



The legendary Polo GT commands the kind of respect that doesn't come easy. Its revolutionary TSI engine strikes the perfect balance between power and consumption. While the 6-speed AT offers a seamlessly smooth gearshift, letting you blaze down the road at 110 PS power and 175Nm torque.

The iconic ride comes with a bold GT badge on a suave honeycomb grille, distinct black outside rear-view mirrors that are designed to stand out and effortlessly stunning sporty features - a package that offers the kind of power to play the rest of the road can only dream of.

1 GT Badge

2 Spoiler

3 ORVM

4 Automatic Gear Box

Colours



*Black roof as optional in Candy White, Flash Red, Sunset Red and Lapiz Blue.
*Polo GT available in Candy White, Flash Red, Sunset Red , Carbon Steel and Lapiz Blue.

Technical Specifications

Engine		1.0 MPI	1.0 TSI
Variants		Trendline/Comfortline	Highline Plus MT/AT/GT TSI
Powertrain	Engine Type	Multipoint Fuel Injection (MPI)	Turbocharged Stratified Injection (TSI)
	Displacement (cc)	999	999
	Transmission	5 Speed Manual	6 Speed Manual/6 Speed Automatic
Performance	Max. Power [PS (kW) @ rpm]	76 (56) @ 6200 rpm	110 (81) @ 5000-5500 rpm
	Max. Torque [Nm @ rpm]	95 @ 2950-3800 rpm	175 @ 1750 - 4000 rpm
Steering	Type	Electronic Power Steering	Electronic Power Steering
	Turning Radius (m)	4.9	4.9
Brakes	Front	Disc	Disc
	Rear	Drum	Drum
Suspension	Front	Mc-Pherson strut with stabilizer bar	Mc-Pherson strut with stabilizer bar
	Rear	Semi independent trailing arm	Semi independent trailing arm
Tyre Size	Trendline	175/70 R14	NA
	Comfortline	185/60 R15	NA
	Highline	NA	185/60 R15
	Highline Plus	NA	195/55 R16
	GT	NA	195/55 R16
	Spare Wheel#	175/70 R14	175/70 R14
Weight	Kerb Weight (kg)- MT	TL-1015, CL-1030	HL Plus- 1072
	Kerb Weight (kg)- AT	NA	HL Plus- 1106, GT-1093
	Gross Vehicle Weight (kg)	1500	MT-1530, AT-1570
Exterior Dimensions	Length (mm)	3971	3971
	Width (mm)	1682	1682
	Height (mm)	1469	1469
	Wheelbase (mm)	2469	2470
Fuel	Fuel Type	Petrol	Petrol
	Tank Capacity (litres)	45	45
	Fuel Efficiency (km/l)*	17.74	MT- 18.24, AT-16.47

*As certified under Rule 115 of CMVR, 1989 by certifying agency and actual on road average may vary. #Spare wheel specification is different from Regular wheels and intended for temporary use only (Except Trendline).

Features

	Trendline ↓	Comfortline ↓	Highline Plus ↓	GT TSI ↓
Exterior				
Headlamps in black finish	•	•	•	•
Honeycomb front grille	•	•	•	•
Dual-beam headlamps	•	•	•	•
GTI inspired bumper with honeycomb design	•	•	•	•
Reflectors on rear bumper	•	•	•	•
Windscreen in heat insulating glass	•	•	•	•
Heat insulating glass for side and rear windows	•	•	•	•
Body coloured outside door handles	•	•	•	•
Body coloured outside mirrors	•	•	•	—
Black outside mirrors	—	—	—	•
R14 steel wheels with full wheel covers	•	—	—	—
R15 'Razor' alloy wheels (Set of 4)	—	•	—	—
R16 'Portago' alloy wheels (Set of 4)	—	—	•	•
Grey wedge at top section of windscreen	—	—	•	•
Cornering lights	—	—	•	•
Door mirrors with turn indicators	•	•	•	•
Black Rear Spoiler	—	—	—	•
Interior				
High-quality scratch-resistant dashboard	•	•	•	•
3 grab handles above doors, folding with coat hooks at the rear	•	•	•	•
Storage compartment in front doors including holders for cups and 1.5-litre bottles	•	•	•	•
Sunglass holder inside glovebox	•	•	•	•
Moonstone finish on front radio surround trim	—	—	•	—
Piano Black front radio surround trim	—	—	—	•
Front centre console including a charging outlet	•	•	•	•
Single folding rear seat backrest	•	•	•	•
Luggage compartment cover / parcel tray	—	•	•	•
Ambient lights with theatre dimming effect	—	•	•	•
Driver side dead pedal	•	•	•	•
Chrome interior accents	—	—	•	•
Black and grey interior theme	•	•	•	•
Sporty flat-bottom steering wheel	•	•	•	•
Leather-wrapped steering wheel with chrome accents and piano black finish	—	—	•	•
Leather-wrapped gearshift knob	—	—	•	•
Glovebox cooling	—	•	•	•
Glovebox light	—	•	•	•
12v charging point at rear	—	—	•	—

	Trendline ↓	Comfortline ↓	Highline Plus ↓	GT TSI ↓
Safety				
Dual-front airbags	•	•	•	•
ABS (Anti-lock Braking System)	•	•	•	•
Front disc brakes	•	•	•	•
Height-adjustable head restraints, front and rear	•	•	•	•
L-shaped rear head restraints	•	•	•	•
Electronic engine immobiliser with floating code	•	•	•	•
Interior rear-view mirror with anti-glare adjustment	•	•	—	—
Auto-dimming interior rear-view mirror	—	—	•	•
3-point front seat belts, rear outer seat belts, lap belt in the middle	•	•	•	•
High-mounted stop lamp	•	•	•	•
Emergency exit	•	•	•	•
Fog lamp, rear	•	•	•	•
Fog lamp, front	—	•	•	•
Anti-pinch power windows, front and rear	—	—	•	•
Electronic Stability Control	—	—	AT only	•
Hill Hold Control	—	—	AT only	•
Infotainment				
Touchscreen Infotainment System	—	—	•	•
Bluetooth™ connectivity for mobile phones (depending on mobile handset capability)	—	•	•	•
^Voice Command (depending on mobile handset capability)	—	—	•	•
i-POD connectivity	—	•	•	•
Phonebook sync	—	•	•	•
SMS viewer	—	—	•	•
^^MirrorLink™	—	—	•	•
USB, Aux-in, SD card, 4 speakers	—	•	•	•
Android Auto™	—	—	•	•
Apple CarPlay™	—	—	•	•
App Connect	—	—	•	•
Radio preparation	•	—	—	—
Steering wheel with audio and bluetooth controls	—	—	•	•

Specifications and features are subject to change without prior notice. ^Depends on mobile handset and application compatibility. Requires ^mobile phone with built-in 'voice search' and 'voice recognition' feature. ^^MirrorLink is a Trademark and Copyright of Car Connectivity Consortium. Segment is defined as sedans under 4m length. Android Auto™ and Apple CarPlay™ Trade name and marks mentioned are owned by respective owners.

Functional	Trendline ↓	Comfortline ↓	Highline Plus ↓	GT TSI ↓
Cruise Control	—	—	•	•
Rain-sensing wipers	—	—	•	•
Air-conditioning	•	•	•	•
‘Climatronic’ automatic air-conditioning	—	—	•	•
Dust and pollen filter	•	•	•	•
Height-adjustable driver's seat	•	•	•	•
Speed sensitive electronic power steering	•	•	•	•
Steering wheel, tilt and telescopic adjustable	•	•	•	•
Central locking with boot opener in Volkswagen logo	•	•	•	•
Digital clock and fuel gauge	•	•	•	•
Front intermittent wipers - 4-step variable speed setting	•	•	•	•
Instrument cluster with tachometer, speedometer, odometer and trip meter	•	•	•	•
Vanity mirror in left side sunvisor	•	•	•	•
Push to open fuel lid	•	•	•	•
R14 steel spare wheel	•	•	•	•
Lane change indicator	•	•	•	•
Outside rear-view mirrors, manually adjustable	•	—	—	—
Outside rear-view mirrors, electrically adjustable	—	•	•	•
Outside rear-view mirrors, electrically foldable	—	—	•	•
Power windows, front doors	•	—	—	—
Power windows, all doors	—	•	—	—
Power windows, all doors with one-touch operation (front and rear)	—	—	•	•
Rear defogger	—	•	•	•
Rear windshield wash and wiper	—	•	•	•
Remote-controlled central locking	—	•	•	•
Opening and closing of windows with key remote	—	—	•	•
Multi-function Display (MFD) trip computer	—	•	•	•
Speed sensing auto door locks	—	•	•	•
Rear parking sensors	•	•	•	•
Front centre armrest with rear AC vent	—	—	•	—

Specifications and features are subject to change without prior notice.

Accessories

Sports and Design

Volkswagen Genuine Roof Edge Spoiler

The Roof Edge Spoiler turns the hatchback into one large aerodynamic wing. While giving the car a wholesome sporty look. That effortless glide you feel down a stretch? that’s where it comes from.



Available in below colours:



Part No. 6RG 071 644 P3G



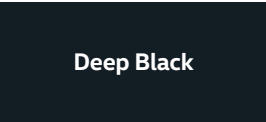
Part No. 6RG 071 644 P3G



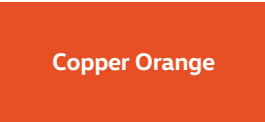
Part No. 6RG 071 644 A9W



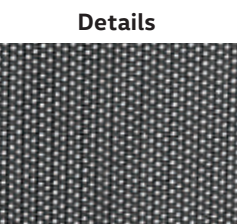
Part No. 6RG 071 644 B9A



Part No. 6RG 071 644 C9X



Part No. 6RG 071 644 A2W



Volkswagen Genuine Sunblind

Keep the Sun where it belongs, on the outside, with the Volkswagen Sunblinds. Expect optimal protection and thermal insulation without compromising on safety and visibility. The details of the sunblind are scientifically designed to provide maximum thermal insulation. Available for both the rear windows as well as the window sides.

Part No. 6RG 064 365

Sunblind for the rear side windows and for the rear window.



Volkswagen Genuine Front Armrest With Storage

The front, centre armrest not only helps give your body the right position for driving, it’s also very handy for all those little things you might need on your daily commute. Available colours:

- Titanium Black - Part No. 6RF 061 123 XPA
- Desert Beige - Part No. 6RF 061 123 OQF

R16, Anthracite, Gloss Machined
Part No. 6R0 071 496 16Z



Volkswagen Genuine Premium Textile Floor Mats

The textile floor mats are made from a special hard-wearing, robust woven velour and they fit in very snugly into the footwells. The front mats that house the Polo lettering are fixed in place to prevent slipping using the points provided in the floor area. With the anti-slip rear coating the rear mats never end up where they aren't supposed to be.

Black: Part No. 6RG 061 225 041
Beige: Part No. 6RG 061 225 UHS

Volkswagen Genuine Body Side Moulding In Chrome And Black

The Side Moulding on the Polo is a sight to behold. Not only do they add to the glamour of the car, they also keep the exterior from scratches and minor bumps.

Chrome: Part No. 6RG 071 328 B DML
Black: Part No. 6RG 071 328



Volkswagen Genuine All-weather Floor Mats

Keep the footwell clean all year round: the perfectly fitting, durable rubber Floor Mat Set with Polo embossing on the front mats does not simply keep out dirt and moisture, but is also considerably lighter and has less odour than conventional mats. The set is 100% recyclable and are attached to the vehicle floor using the integrated fastening system to prevent slipping.

Part No. 6RG 061 500 A



Volkswagen Genuine Mudflaps

Driving in wet weather conditions can be a messy affair for both your car and the one right behind you. Keep flying dirt, stone and pebbles and sprays of water at bay with these extremely durable mudflaps.

Part No. 6RG 075 110 B (Set of 4)



1 Volkswagen Genuine Protective Strip For The Tailgate - Chrome And Black

The rear lid protection strip in high-gloss chrome is not only gorgeous to look at, it effortlessly protects the tailgate edges from a variety of ills. It is remarkably easy to mount with just a simple dab of glue holding it onto the bottom edge of the tailgate.

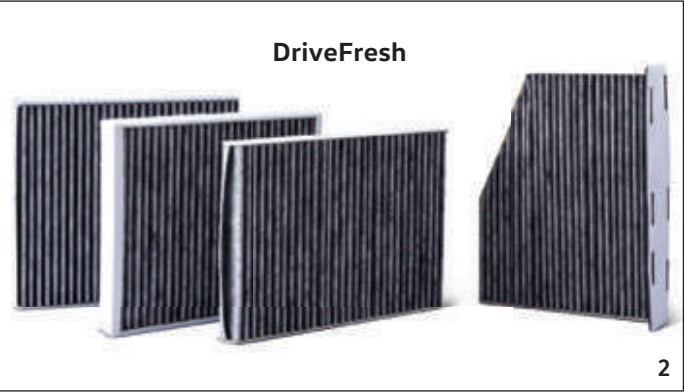
Chrome: Part No. 6RG 071 360
Black: Part No. 6RG 071 360 A

3 Volkswagen Genuine Car Cover
Part No. 6C0 061 205

2 Volkswagen Carbon Activated AC Air Filter

Keep the outside firmly outside. Whether its bacteria, noxious gases, dust, odour or pollen, the Volkswagen Carbon Activated AC Air Filter manages 3 micron particulate size with a 91% efficiency. After all, health is happiness.

Part No. 6RG 091 700





1 Snake Hook for Headrest | **Part No. 000 061 126 A04 1**

2 Waste Bag | **Part No. 000 061 107**

3 Thermobox (Cooler and Heater Function)
Part No. 000 065 400 F

4 Hooks for Headrests (Travel and Comfort) Bag Hooks
Part No. 000 061 126 B

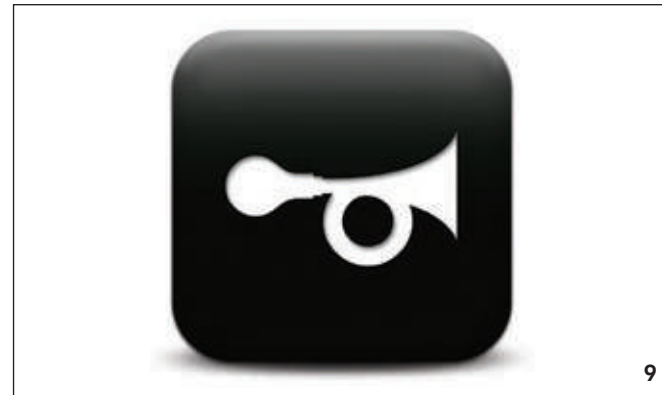
5 Basic Carrier (Travel and Comfort) Basic Module
Part No. 000 061 122



Volkswagen Anti-theft Wheel Bolt Locking Sets

Secure your alloy wheels even more effectively against jealous thieves with the theft-hindering wheel bolt locking set.
Colour: Black. 1 set = 4 pieces.

Part No. 000 071 597 D



6 Computer Bracket (Travel and Comfort) for iPad Air 1/2
Part No. 000 061 125 E

7 Bracket for Action Camera (Travel and Comfort) (Rotates 360°)
Part No. 000 061 125 J

8 Clothes Hanger (Travel and Comfort) | **Part No. 000 061 127 B**

9 Dual Tone Horn Kit | **Part No. 6RF 093 806 KIT**

10 Folding Table (Travel and Comfort) | **Part No. 000 061 124**



Volkswagen Genuine Valve Caps

Customisation down to the smallest detail: the four valve caps are embossed with the Volkswagen logo and provide the valves with optimal protection against dust, dirt and moisture.
1 set = 4 pieces.

Part No. 000 071 215

Transport

Roof Box, Matt Black

The Roof Box has an impressive volume of roughly 340 litres and has been designed to not diminish, but rather enhance the aerodynamic design of the car. It's also handy in eliminating unpleasant noises threatening to disturb the driving experience. The Roof Box has been adapted to the modern design line of the new Volkswagen models. It opens from one side and is equipped with a 2-lock system. Thanks to the comfort sliding fitting system, the box is easy to mount on the roof bars with minimal motions.

Part No. 000 071 200



Volkswagen Genuine Bicycle Carrier

Formed of special UV resistant plastic, the aerodynamic Bicycle Carrier is mounted on the roof bars using chromed steel holders. The bicycle slides effortlessly into the self-adjusting wheel receiver, leaving both hands free for fastening. As the roof bars, the pre-assembled supporting rods are also City Crash1 and City Crash Plus Test approved. They have a handy maximum load-bearing capacity of 17 kg.

Part No. 000 071 128 F



Volkswagen Genuine Roof Bars

Be well-equipped for the best of adventures with the help of the Volkswagen Accessories Roof Bar Systems. The perfectly fitting, aerodynamically-shaped aluminium profile roof bars are perfect for things like surfboards, bicycles, skis and snowboards or even roof boxes. The roof bars are entirely pre-assembled and are not only City Crash1 tested but have also passed the much stricter Volkswagen City Crash Plus Test.

Part No. 6R0 071 126 For 4-door



Comfort and Protection

We take our interiors just as seriously as say our engine or safety features. And they are truly a cut above. The cosy, new seat covers are testimony to our attention to detail. All upholsteries amply highlight the use of high-quality materials and uncompromising, workmanship giving you maximum comfort and support. There are also plenty of bold new enhancements such as leatherette seat covers with stitching that adds to the richness of the interiors.



Polo GT Sport seats

Features:

- UV resistant
- Easy to maintain
- Tear resistant
- Fire retardant
- No chemical odour

Unobtrusive and simple, the vertical design is just the perfect choice if you want a clean-cut look.

Sea Shell, **Part No. 6R0 061 602 AAJ**

Desert Beige, **Part No. 6C0 061 602 A WSH**



The apple design is a perfect choice for those who want something minimal and off-beat.

Desert Beige, **Part No. 6C0 061 602 WSH**

Sea Shell, **Part No. 6R0 061 602 DCP**

The honeycomb design adds a more pronounced effect to your seats.

Titanium Black with Grey stitching,
Part No. 6RG 061 602 XNO

Desert Beige with Grey stitching,
Part No. 6RG 061 602 A

Titanium Black perforated honeycomb (GT Sport),
Part No. 6RW 061 602



Headlamp Performance Bulb

USP:

- Enhanced gas mixture
- Reduced dimension of filament (+10% luminance obtained)
- Chromium top with blue ring-around-the-collar
- Up to + 100% beam performance, more vision
- Light colour up to 3300 Kelvin

H4 High performance bulb

Part No. 6RG 052 000

H7 High performance bulb

Part No. 6RG 052 000 A



Standard Plus Radio

USP:

- Touchscreen Radio
- Android App
- Car Play
- Multimedia Input Radio

Part No. 6RF 035 187 RAD



Touchscreen Multimedia Radio

Peace of mind all along the way

Owning the Polo gives you a sense of comfort, and rightly so. Because, the Polo comes with a host of service benefits that would give you all the comfort you need while driving this masterpiece.

4EVER
CARE

4 Year
Warranty

4 Year
Roadside Assistance

3
Free Services*

- New vehicle warranty for 4 years / 100,000 kilometers, whichever is earlier
- 4 years of Volkswagen Roadside Assistance for uninterrupted driving experience
- 3 Complimentary Services*
 - Swagat @ 1,000 kilometers / 1 month – 10-point Safety Check
 - 7,500 kilometers / 6 months – 40-point Free Inspection
 - 15,000 kilometers / 1 year – Labour-free Periodic Maintenance Service Interval

The Periodic Maintenance Interval of your Volkswagen is scheduled for every 15,000 kilometers or 1 year, whichever is earlier.

Volkswagen Value-added Warranties

- Unparalleled Anti-perforation warranty
 - 6 years: Polo, Ameo and Vento
 - 12 years: Other Volkswagen models in India
- Unmatched Paint Warranty
 - 3 years: Polo, Ameo and Vento
 - 6 years: Other Volkswagen models in India
- **2-year warranty with unlimited kilometers on Volkswagen Genuine Parts®
- **1-year warranty with unlimited kilometers on selected Volkswagen Genuine Accessories

Volkswagen Extended Warranty at an attractive price

- 4+1 Year / 100,000 kilometers (covering 5th year)
- 4+2 Years / 1,50,000 kilometers (covering 5th and 6th year)

Volkswagen Add-on Warranty

Volkswagen offers Add-on Warranty even after your car is out of new vehicle warranty, you can still have peace of mind by availing Add-on Warranty for additional 1 year / 20,000 kilometres which is renewable up to 7 years with a nominal premium.

Volkswagen Service Value Packages (SVP)

Avail attractive Service Value Packages for 1 Year / 2 Years / (4+1) Years and enjoy additional benefits worth minimum INR 3000/ ^.

Volkswagen Roadside Assistance

Every Volkswagen car is registered for Volkswagen Roadside Assistance for 4 years from its date of sale. This provides the vehicle with home or roadside recovery in the unlikely events of breakdowns across India (within covered limits). The services can be extended further to 1 year or 2 years and can be renewed annually for a nominal cost, up to 7 years from the date of sale of vehicle. **24 x7 Roadside Assistance Helpline: 1800 102 1155 / 1800 419 1155.**

Volkswagen Co-branded Motor Insurance and Drive Assure Elite

To care for your Volkswagen and protecting it against the unexpected events such as accidents, natural calamities, theft and so on, our motor insurance policy with Drive Assure Elite Value- added covers damages due to rodent bite, replacement of vehicle in case of total loss, wheel rim cover, etc. So, your car is protected when you need it the most.

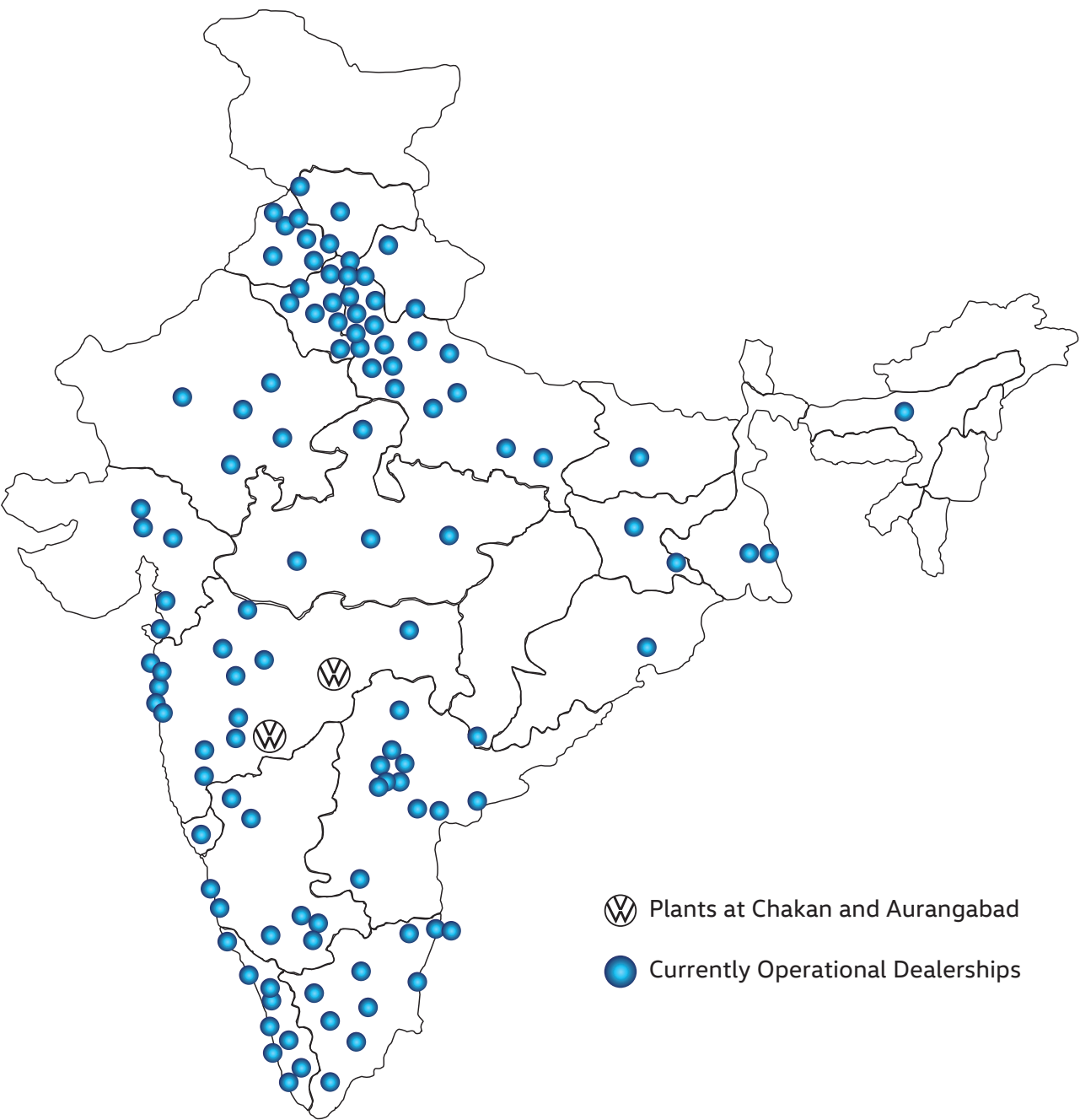
For more information, visit our Authorised Sales / Service Centres, write to customer.care@volkswagen.co.in or refer to Volkswagen website www.volkswagen.co.in

24x7 Customer Care Helpline: 1800 102 0909

Terms and conditions apply.

Roadside Assistance within covered limits and ^Service Value Package with additional benefits. Insurance at the sole discretion of the insurance company and subject to change without prior notice. Contact dealership for detailed terms and conditions of individual services. **Customer to produce invoice copy to Volkswagen Authorised Dealers for availing parts and accessories warranties. Details and benefits mentioned in this brochure are subject to change without prior notice.

Dealer Network



Disclaimer: Map drawn not to scale.
Updated till October, 2020.

The Polo

Printed in India

ŠKODA AUTO Volkswagen India Pvt. Ltd.

October 2020

Subject to change without notice

volkswagen.co.in

Call **1800 102 0909**

*Terms and conditions apply. Features and accessories shown may not be a part of standard equipment and are subject to change without prior notice. Actual colour may vary. The offers with regard to scope of delivery, appearance, performance, dimensions and weights, in addition to illustrations and all information regarding fittings and technical data, are based on the characteristics of the international market and correspond to the knowledge available at the time of printing. Volkswagen reserves the right to alter the details of specifications and equipments without any notice. Images shown are for representation purposes only. For further details, please visit our authorised dealership.

Your Volkswagen Dealer